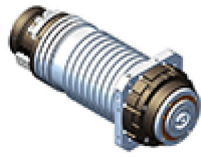


BODY DIAMETER Ø180 - Ø350



ES510 - H6161H1809

Diameter Ø180 - Nm 38-S1/46-S6 - kW 24-S1/28,8-S6 - HSK A63 - 18/24.000rpm - encoder - rotary joint



ES510 - H6161H1699

Diameter Ø180 - Nm 48-S1/57-S6 - kW 30-S1/36-S6 - HSK A63 - 18/24.000rpm - encoder - rotary joint



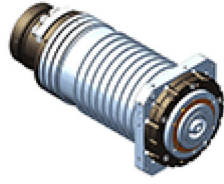
ES510 - H6161H1937

Diameter Ø180 - Nm 55,7-S1/75,2-S6 - kW 70-S1/94,5-S6 - HSK A63 - 28.000rpm - encoder - rotary joint



ES510 - H6161H2060

Diameter Ø180 - Nm 67-S1/87,5-S6 - kW 42-S1/55-S6 - HSK A63 - 18/24.000rpm - encoder - rotary joint



ES510 - HSK A63

Diameter Ø180 - Nm 90-S1/120-S6 - kW 50-S1/67,5-S6 - HSK A63 - 20.000rpm - encoder - rotary joint



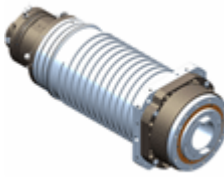
ES510 - H6161H1796

Diameter Ø180 - Nm 95,5-S1/124-S6 - kW 50-S1/65-S6 - HSK A100 - 12/15.000rpm - encoder - rotary joint



ES511 - H6161H1530 Turning

Diameter Ø190 - Nm 95,5-S1/124-S6 - kW 50-S1/65-S6 - ISO50 - 12/15.000rpm - encoder - rotary joint



ES511 ISO50 - H6161H1835

Diameter Ø190 - Nm 150-S1/202-S6 - kW 47-S1/63-S6 - ISO50 - 8.000rpm - encoder - rotary joint



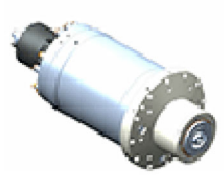
ES511 - H6161H1642

Diameter Ø190 - Nm 200-S1/241-S6 - kW 63-S1/76-S6 - HSK A100 - 12/13.000rpm - encoder - rotary joint



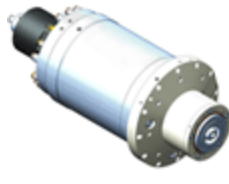
ES550 - H6161H1685

Diameter Ø210 - Nm 124-S1/149-S6 - kW 26-S1/31-S6 - HSK A63 - 18.000rpm - encoder - rotary joint



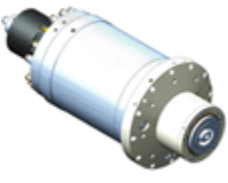
ES575 HSK A63

Diameter Ø230 - Nm 53-S1/64-S6 - kW 100-S1/120-S6 - HSK A63 - 30000rpm - encoder - rotary joint



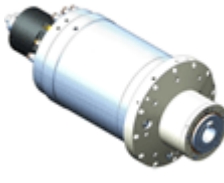
ES575 HSK-A63 - H6161H1600

Diameter Ø230 - Nm 61,7-S1/74-S6 - kW 35-S1/42-S6 - HSK A63 - 18/24.000rpm - encoder - rotary joint



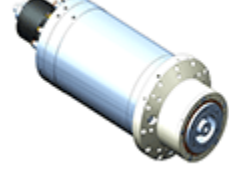
ES575 HSK-A63 - H6161H1463

Diameter Ø230 - Nm Y 72-S1/87-S6 - Nm Δ 34,5-S1/41,5-S6 - kW YΔ 25-S1/30-S6 - HSK A63 - 24.000rpm



ES575 BT40 - H6161H1449

Diameter Ø230 - Nm 95,5-S1/114,5-S6 - kW 30-S1/36-S6 - BT40 - 16.000rpm - encoder - rotary joint



ES575 HSK A100

Diameter Ø230 - Nm 170-S1/216-S6 - kW 54-S1/68-S6 - HSK A100 - 10000rpm - encoder - rotary joint



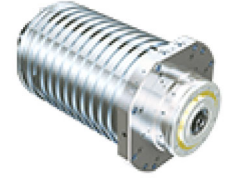
ES514 - H6161H2056

Diameter Ø230 - Nm 191-S1/229-S6 - kW 34-S1/41-S6 - HSK T100 - 10.000rpm - encoder - rotary joint



ES518 - H6161H2014

Diameter Ø310 - Nm 298-S1/358-S6 - kW 20-S1/24-S6 - PSC63 - 3.000rpm - encoder - rotary joint



ES518 - H6161H1994

Diameter Ø310 - Nm 410-S1/493-S6 - kW 43-S1/51,6-S6 - HSK A100 - 8.000rpm - encoder - rotary joint